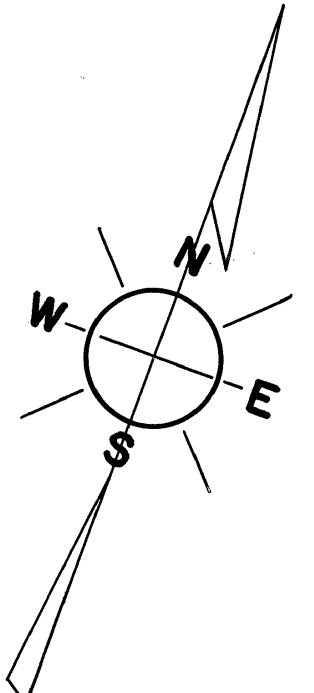
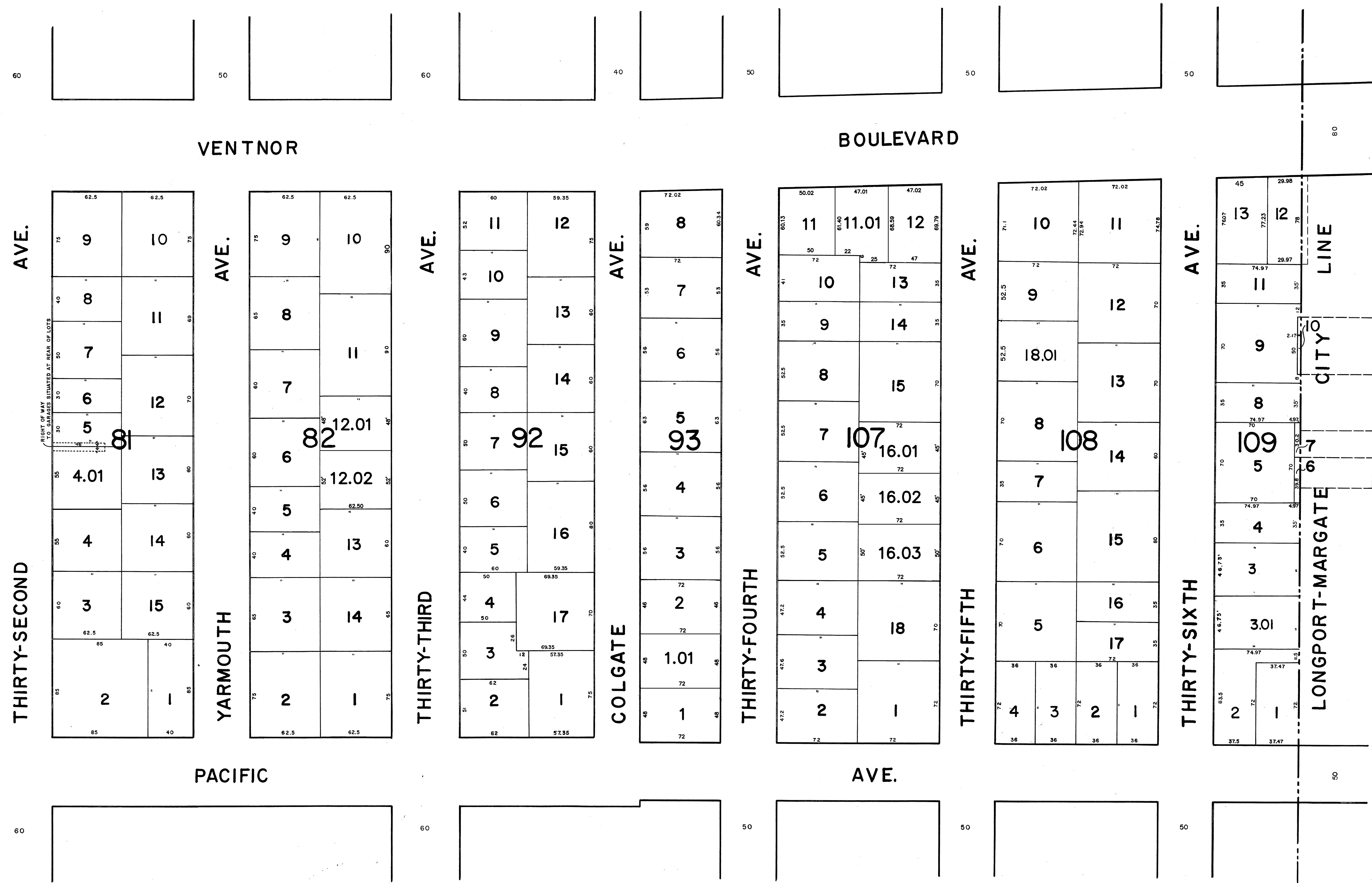


ADJOINS SHEET 14

ADJOINS SHEET 9



DATE	REVISIONS	BY
6/2017	BL82 12.01&12.01 BL107-16.01,16.01&16.03	PER DC
2/2007	BLOCK 107; LOTS 11, 12 - SUBDIVISION	M. ENG
2/2007	BLOCK 93; LOTS 1,2 - SUBDIVISION	M. ENG
5/2005	BLOCK 81 LOTS 4 & 4.01, PER ASSESSOR	M. ENG
10/25/02	BLOCK 81, LOT 4, SUBDIVISION	CBA
5/2001	BLOCK 109, LOT 12, SUBDIVISION	CBA
7/1/93	BLOCK 108 PER ASSESSOR	CBA
2-1-92	GENERAL - PER N.J. DEPT. OF TREASURY	CBA

ELECTRONIC COPY

DANIEL J. PONZIO SR.  
 NEW JERSEY LIC. #GS37603  
 TO SHOW CONDITIONS AS OF JUNE, 2017

NEW JERSEY DEPARTMENT OF THE TREASURY  
 DIVISION OF TAXATION  
 PUBLIC UTILITY TAX BUREAU  
 APPROVED AS A TAX MAP PURSUANT TO THE  
 PROVISIONS OF CHAPTER 125, LAWS OF 1918, ETC.  
 FOR THE DIRECTOR, DIVISION OF TAXATION.  
 BY *J. H. Schilling, Jr.* E.L.S.  
 LIC. #5706 STAT. SUPERVISOR  
 DATE DEC 8 1970 SERIAL No. 498

**TAX MAP**  
 OF THE  
**BOROUGH OF LONGPORT**  
**ATLANTIC COUNTY, N. J.**  
 SCALE: 1" = 50'  
 1970  
 REV. JAN. 1984  
 J. THOMAS WOOD, JR., P.E. & L.S. NO. 8139  
 GEORGE E. SCHILLING, L.S. NO. 16198  
 421 GUARANTEE TRUST BLDG.  
 ATLANTIC CITY, N. J.

ADJOINS SHEET 12