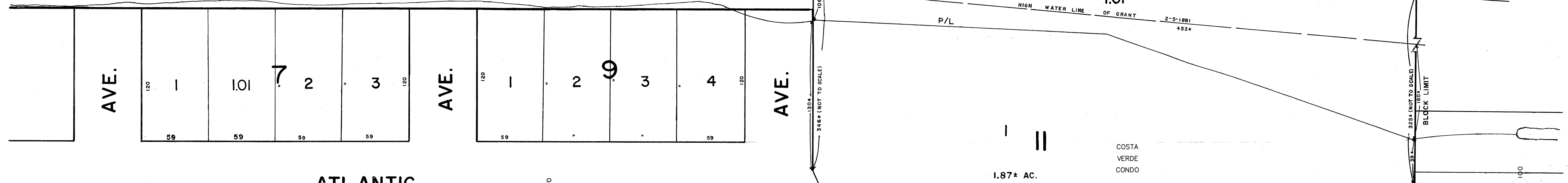
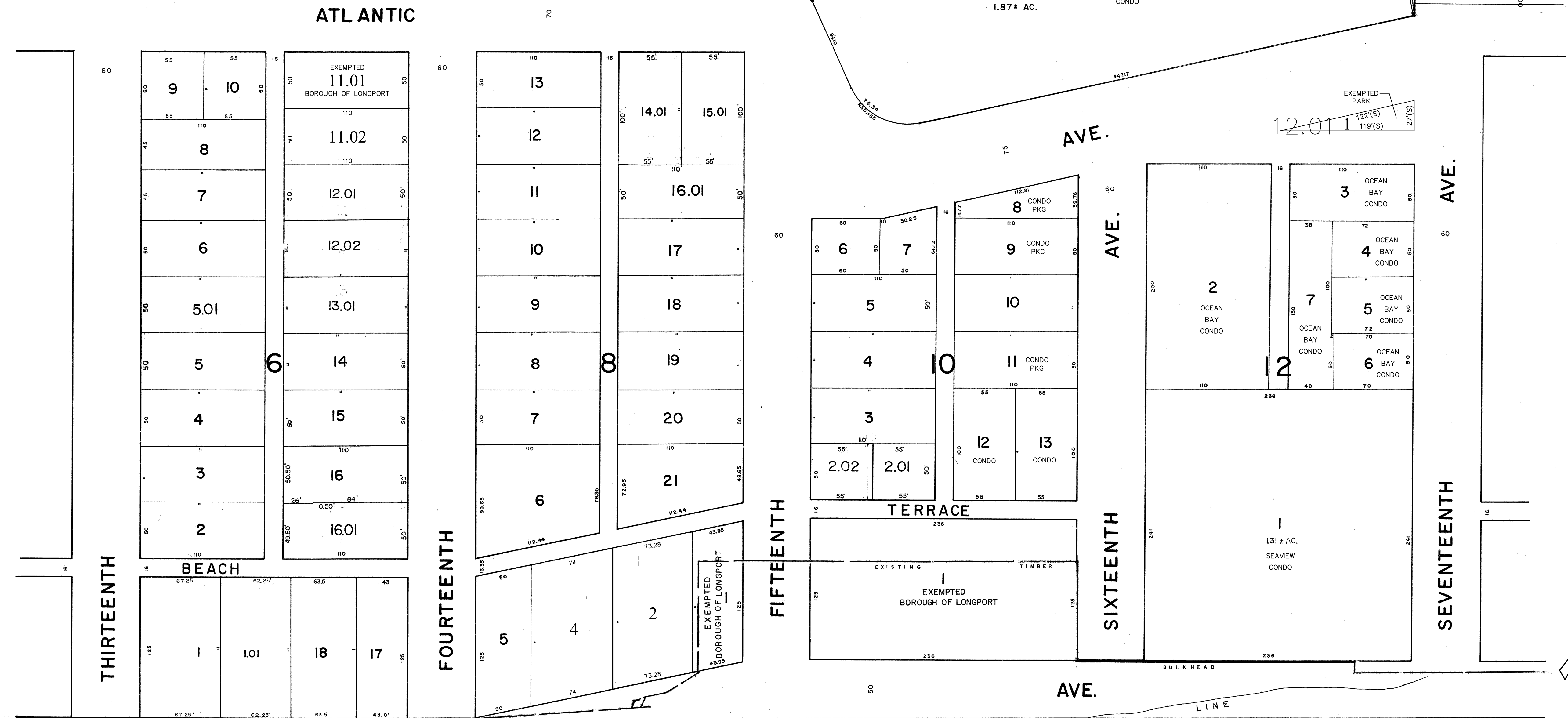


ORIGINAL LINE OF GRANT TO JAMES LONG, FEB. 5, 1881

CHANNEL



ADJOINS SHEET 2



ADJOINS SHEET 4

6/2017	ADD CONDO INFORMATION	PER D.C.
10/25/90	BLOCK 8, LOTS 2 & 4	CBA
5/2001	BLOCK 12.01, LOT 1, PER ASSESSOR	CBA
5/2001	BLOCK 6, LOT 11, SUBDIVISION	CBA
7-1-93	BLOCK 9, PER ASSESSOR	CBA
12-4-92	GENERAL - PER NA. DEPT. OF TREASURY	CBA
12-26-91	BLOCK 10, PER ASSESSOR	CBA
12-29-91	BLOCK 6, PER ASSESSOR	CBA
10-15-90	BLOCK 8, LOT 14-16 CORRECT R & DIM.	DECO
10-15-90	BLOCK 6, LOT 16 MINOR SUBDIVISION	DECO
DATE	REVISION	BY

ATLANTIC

ELECTRONIC COPY

DANIEL J. PONZIO SR.  
NEW JERSEY LIC. #GS37603  
TO SHOW CONDITIONS AS OF JUNE, 2017

OCEAN

NEW JERSEY DEPARTMENT OF THE TREASURY  
DIVISION OF TAXATION  
PUBLIC UTILITY TAX BUREAU

APPROVED AS A TAX MAP PURSUANT TO THE PROVISIONS OF CHAPTER 175, LAWS OF 1913, ETC. FOR THE DIRECTOR, DIVISION OF TAXATION.

BY *G. N. D'Amico*, E. 61. S.  
LIC. #5009 STAT SUPERVISOR  
DATE **DEC 8 1970** SERIAL No. **493**

**TAX MAP**  
OF THE  
**BOROUGH OF LONGPORT**  
**ATLANTIC COUNTY, N.J.**

SCALE: 1" = 50'      1970  
REV. JAN. 1984

J. THOMAS WOOD, JR., P.E. & L.S. NO. 8139  
GEORGE E. SCHILLING L.S. NO. 16198  
421 GUARANTEE TRUST BLDG.  
ATLANTIC CITY, N. J.

DECO 1988 REVISIONS