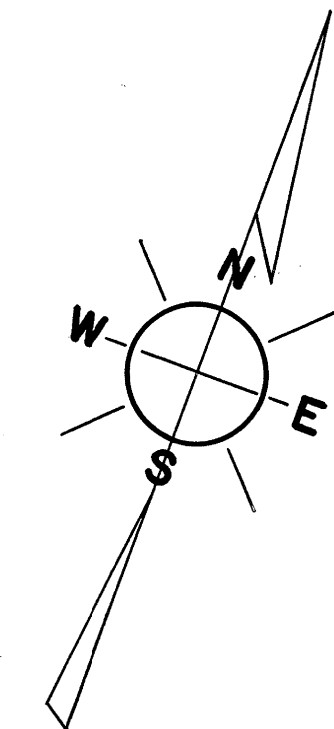
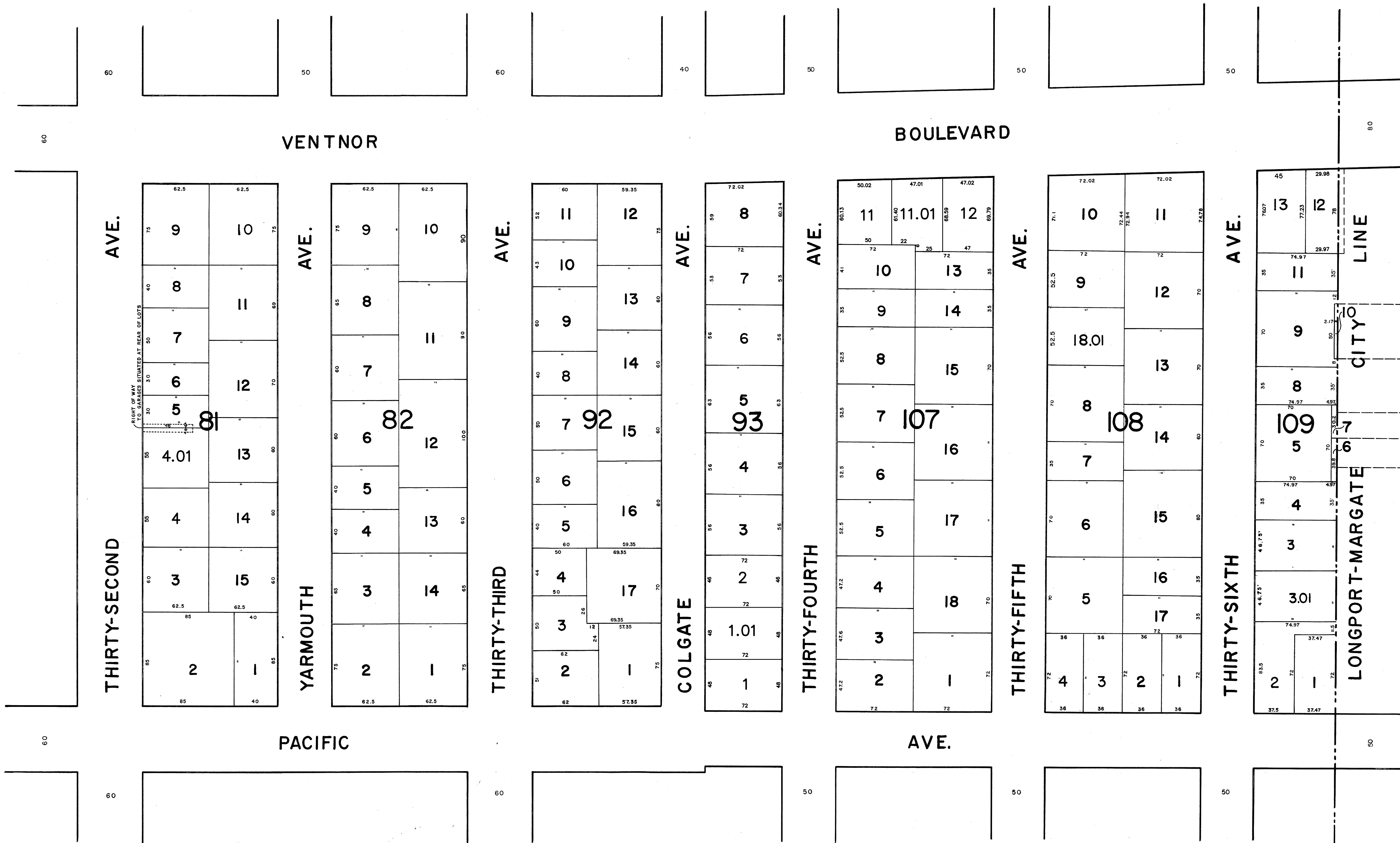


ADJOINS SHEET 14

ADJOINS SHEET 9



DATE	REVISIONS	BY
2/2007	BLOCK 107; LOTS 11, 12 - SUBDIVISION	M. ENG
2/2007	BLOCK 93; LOTS 1, 2 - SUBDIVISION	M. ENG
5/2005	BLOCK 81; LOTS 4 & 4.01, PER ASSESSOR	M. ENG
10/25/02	BLOCK 81, LOT 4, SUBDIVISION	CBA
5/2001	BLOCK 109, LOT 12, SUBDIVISION	CBA
7/1/93	BLOCK 108 PER ASSESSOR	CBA
2-1-92	GENERAL - PER N.J. DEPT. OF TREASURY	CBA

ADJOINS SHEET 12

NEW JERSEY DEPARTMENT OF THE TREASURY
 DIVISION OF TAXATION
 PUBLIC UTILITY TAX BUREAU
 APPROVED AS A TAX MAP PURSUANT TO THE
 PROVISIONS OF CHAPTER 125, LAWS OF 1913, ETC.
 FOR THE DIRECTOR, DIVISION OF TAXATION.
J. H. ...
 DATE DEC 8 1970 SERIAL No. 498

TAX MAP
 OF THE
BOROUGH OF LONGPORT
ATLANTIC COUNTY, N.J.
 SCALE: 1" = 50'
 1970
 REV. JAN. 1984
 J. THOMAS WOOD, JR., P.E. & L.S. NO. 8139
 GEORGE E. SCHILLING, L.S. NO. 16198
 421 GUARANTEE TRUST BLDG.
 ATLANTIC CITY, N.J.