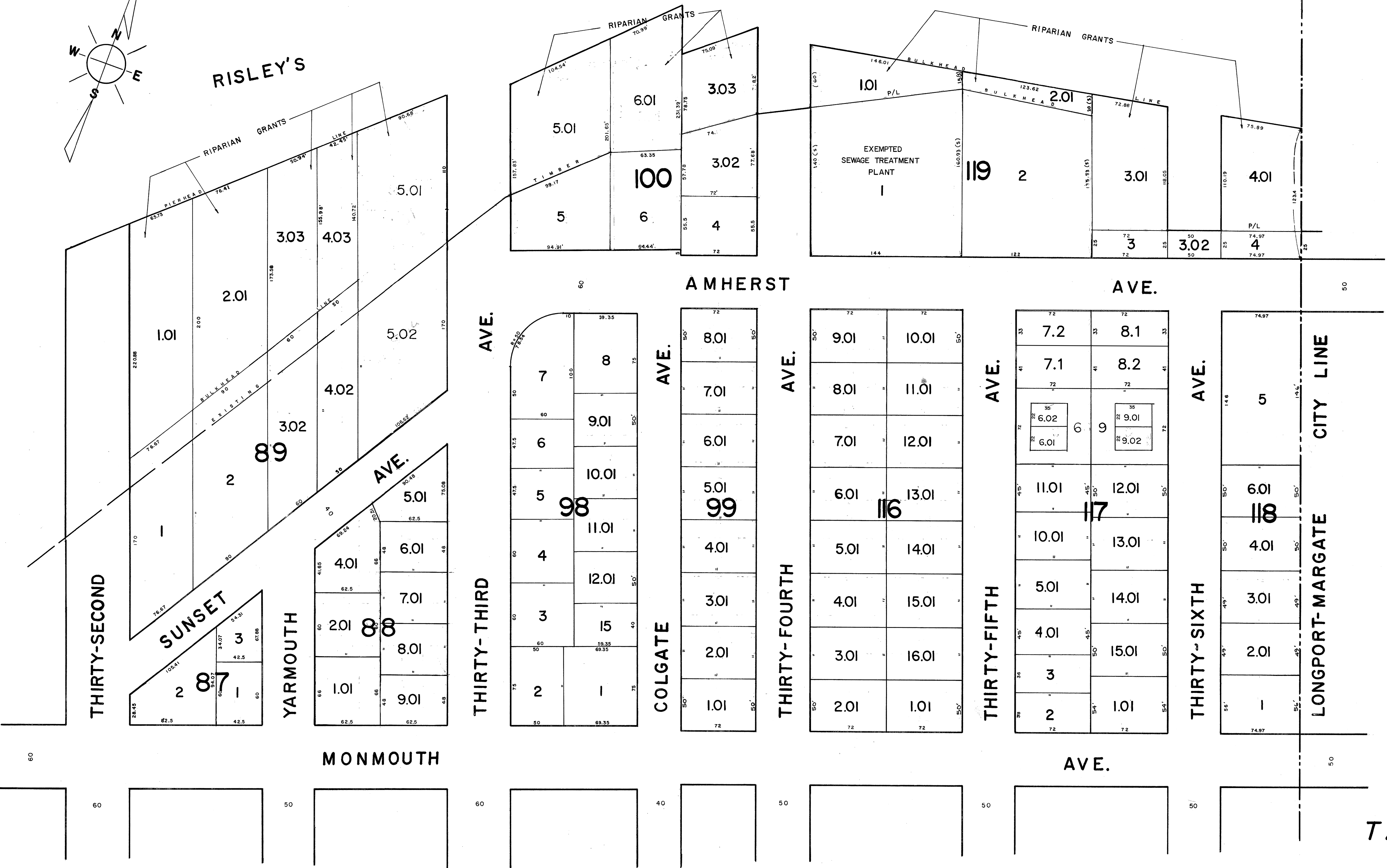


CHANNEL

RISLEY'S

ADJOINS SHEET II



DATE	REVISION	BY
5/2005	BLOCK 117 LOTS 7.1,7.2,8.1,8.2 PER ASSESSOR	MJL
12-1-92	GENERAL - PER N.J. DEPT. OF TREASURY	CBA
12/26/91	BLOCK 89 - PER ASSESSOR	CBA
12/26/91	BLOCK 17 - PER ASSESSOR	CBA
10-18-90	BLOCK 100, L1, L1.01, 2, 2.01 MIN. SUBD.	DECO
10-18-90	BLOCK 89, L1, 5.02, 5.03, 6.01 MIN. SUBD.	DECO

ADJOINS SHEET 15

NEW JERSEY DEPARTMENT OF THE TREASURY  
 DIVISION OF TAXATION  
 PUBLIC UTILITY TAX BUREAU

APPROVED AS A TAX MAP PURSUANT TO THE PROVISIONS OF CHAPTER 175, LAWS OF 1913, ETC. FOR THE DIRECTOR, DIVISION OF TAXATION.

BY *J. N. [Signature]* STAT. SUBDIVISION  
 DATE DEC 8 1970 SERIAL No. 433

**TAX MAP**  
 OF THE  
**BOROUGH OF LONGPORT**  
**ATLANTIC COUNTY, N.J.**

SCALE: 1" = 50' 1970  
 REV. JAN. 1984

J. THOMAS WOOD, JR., P.E. & L.S. NO. 8139  
 GEORGE E. SCHILLING, L.S. NO. 16198  
 421 GUARANTEE TRUST BLDG.  
 ATLANTIC CITY, N.J.