

ORIGINAL LINE OF GRANT TO JAMES LONG, FEB. 5, 1881

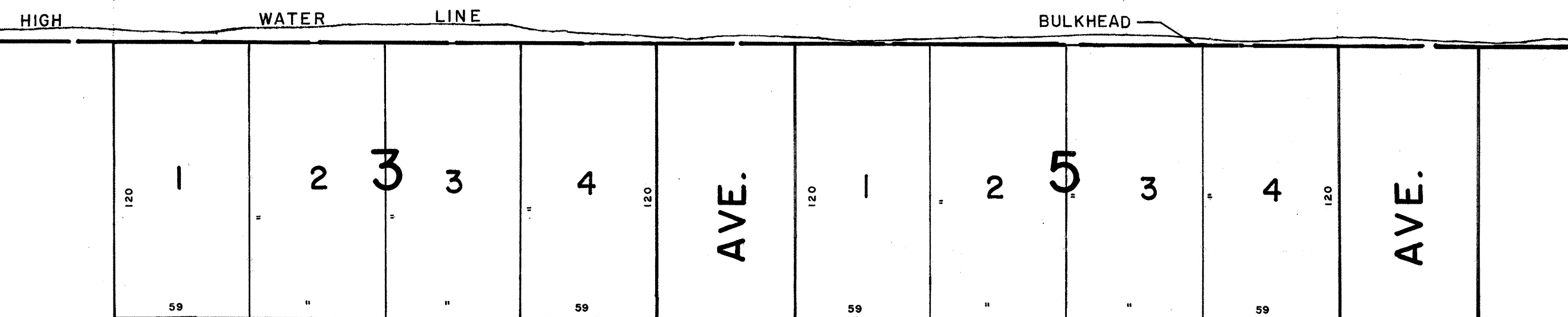
RISLEY'S

CHANNEL

INLET

EXEMPTED BOROUGH OF LONGPORT

120



ATLANTIC

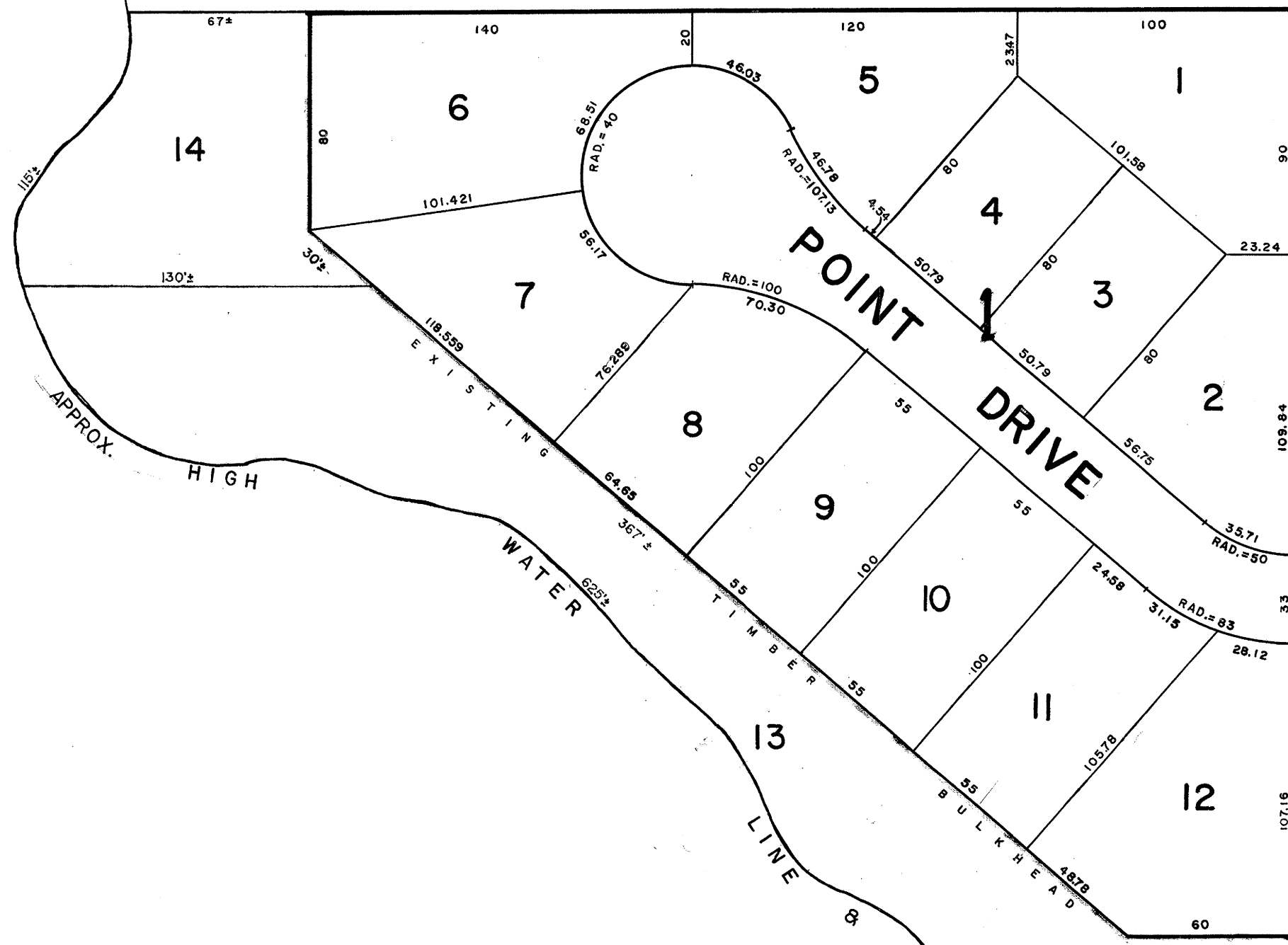
AVE.

HARBOR

EGG

GREAT

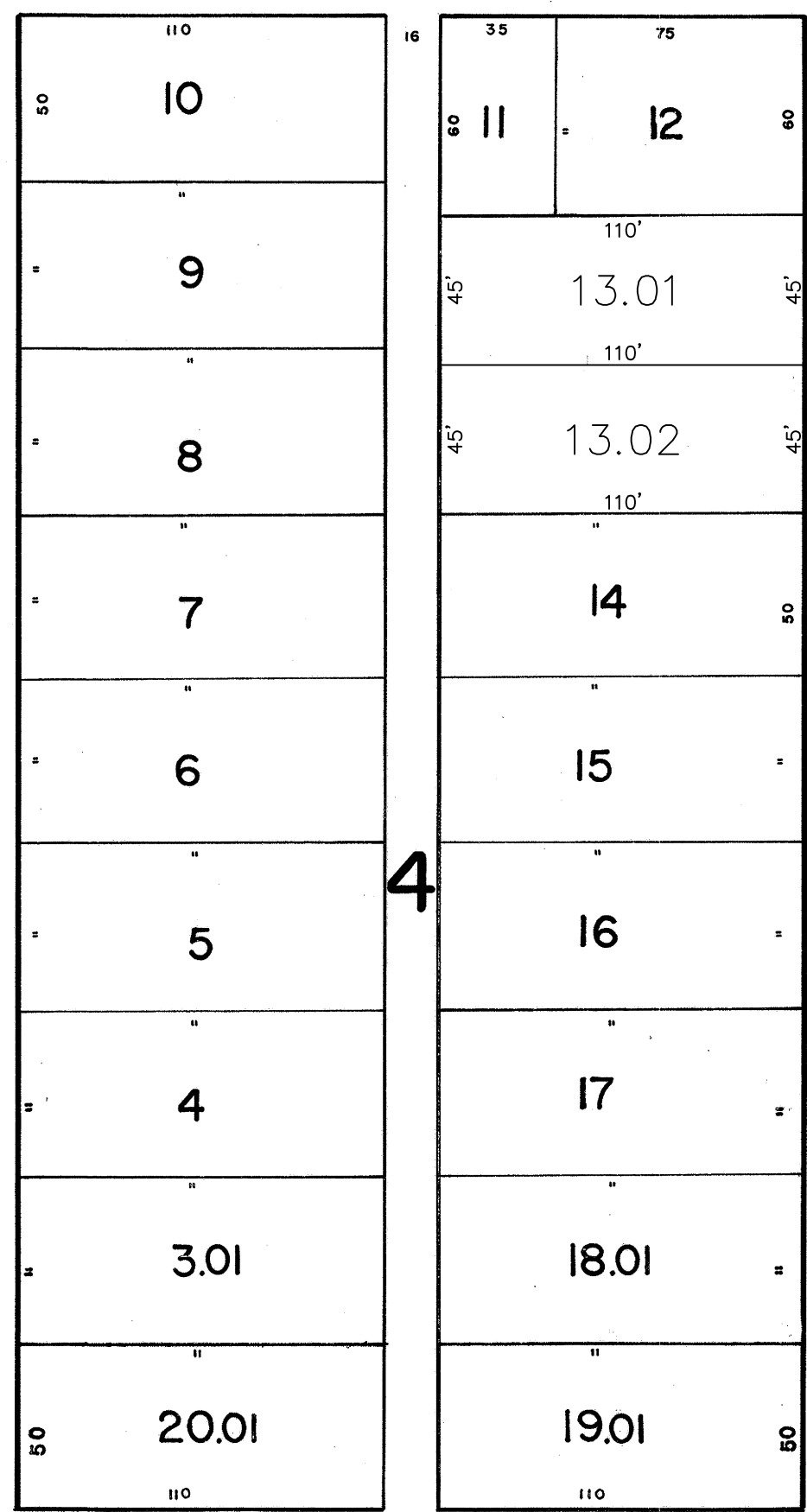
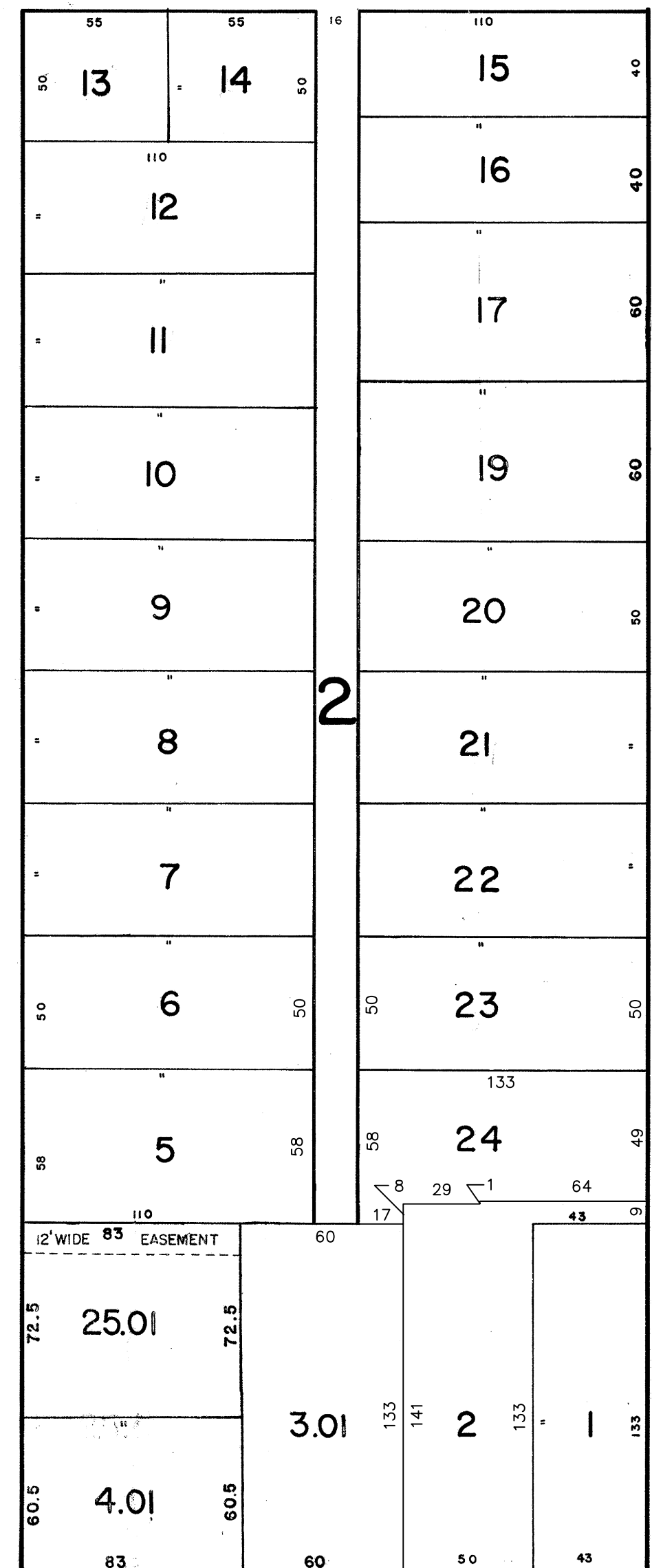
EXISTING STONE JETTY



ELEVENTH

TWELFTH

THIRTEENTH



BEACH

AVE.

ATLANTIC

(N.J.D.E.P. MAP NO. 168-2034, 7/19/77)

HIGH WATER LINE (VARIES)

LOCAL OCEAN

NEW JERSEY DEPARTMENT OF THE TREASURY  
 DIVISION OF TAXATION  
 PUBLIC UTILITY TAX BUREAU  
 APPROVED AS A TAX MAP PURSUANT TO THE  
 PROVISIONS OF CHAPTER 125, LAWS OF 1973, ETC.  
 FOR THE DIRECTOR, DIVISION OF TAXATION.  
 BY *J. M. [Signature]* P.E., E.L., S.,  
 Lic. #5069 STATE SUPERVISOR  
 DATE DEC 8 1970 SERIAL NO. 498

TAX MAP

OF THE  
 BOROUGH OF LONGPORT  
 ATLANTIC COUNTY, N.J.

SCALE: 1" = 50' 1970 REV JAN. 1984

J. THOMAS WOOD, JR., P.E. & L.S. NO. 8139  
 GEORGE E. SCHILLING L.S. NO. 16198  
 421 GUARANTEE TRUST BLDG.  
 ATLANTIC CITY, N.J.

DATE	REVISION	BY
9/2009	BLOCK 4, LOT 2 - DELETE SUBDIVISION	PER T.A.
2/2007	BLOCK 4, LOT 1 - SUBDIVISION	M. ENG
2/2007	BLOCK 2, LOTS 2, 3, 01, 24 - SUBDIVISION	M. ENG
5/2001	BLOCK 4, LOT 13, SUBDIVISION	CBA
5/2001	BLOCK 4, LOT 2, SUBDIVISION	CBA
12-1-92	GENERAL - PER N.J. DEPT. OF TREASURY	CBA

ADJOINS SHEET 3