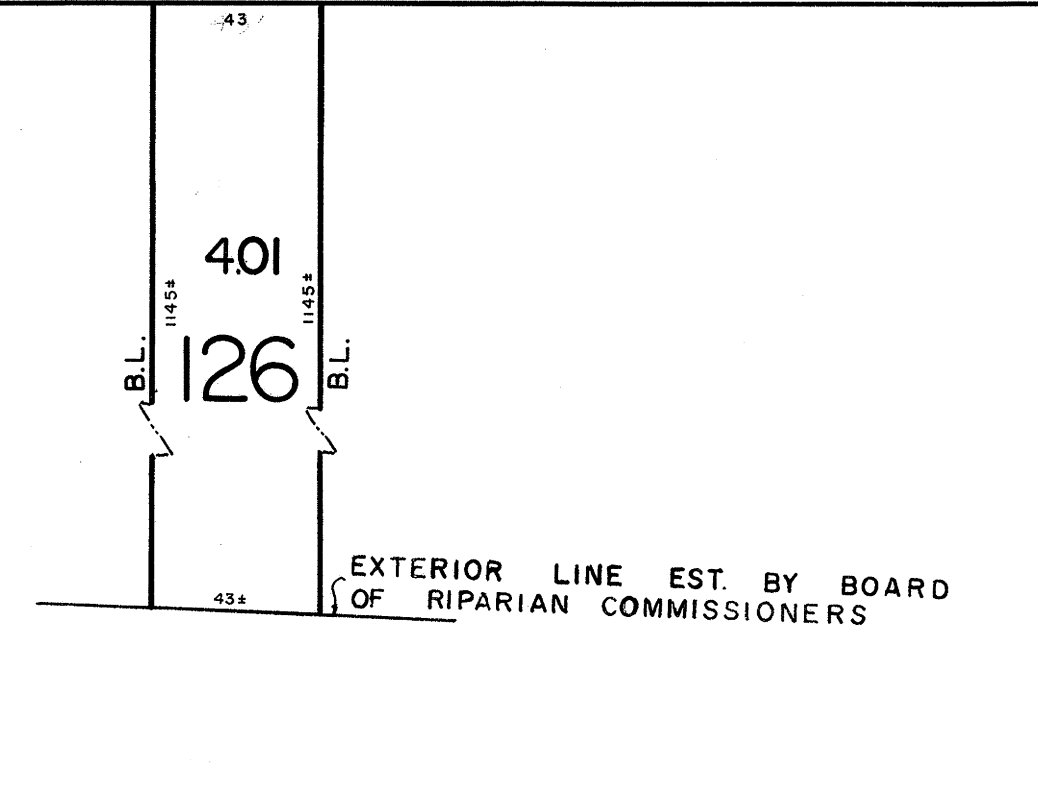
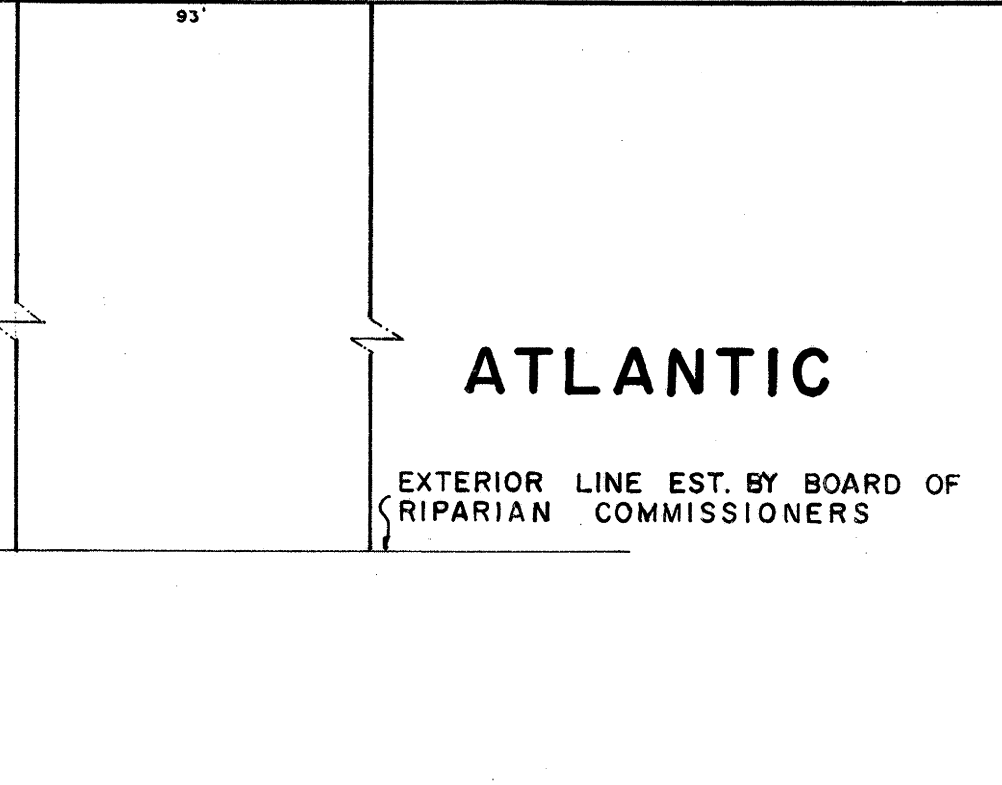




8/2007	BLOCK 13; LOT 3.01 to LOT 3.1 per T.A.	M. ENG
2/2007	BLOCK 13; LOT 9 - SUBDIVISION	M. ENG
2/2006	BLOCK 15; LOT 2 - SUBDIVISION	M. ENG
2/2005	BLOCK 13 LOTS 1.01 & 2, PER ASSESSOR	MUN. ENGR.
5/2005	BLOCK 13 LOTS 5 & 6, PER ASSESSOR	MUN. ENGR.
7/1/93	BLOCK 16 PER ASSESSOR	CBA
12-1-92	GENERAL - PER N.J. DEPT. OF TREASURY	CBA
12/26/91	BLOCK 15, PER ASSESSOR	CBA
12-26-91	BLOCK 15, PER ASSESSOR	CBA
10-5-90	BLOCK 16, LOT 10 MINOR SUBDIVISION	DECO
10-5-90	BLOCK 15, LOT 1 MINOR SUBDIVISION	DECO
10-5-90	BLOCK 14, LOT 18 CORRECT DIMENSION	DECO
10-5-90	BLOCK 14, LOT 1 MINOR SUBDIVISION	DECO
10-5-90	BLOCK 13, LOT 13.01, 21.01 MIN. SUBD.	DECO
DATE	REVISION	BY



NEW JERSEY DEPARTMENT OF THE TREASURY
 DIVISION OF TAXATION
 PUBLIC UTILITY TAX BUREAU
 APPROVED AS A TAX MAP PURSUANT TO THE PROVISIONS OF CHAPTER 175, LAWS OF 1970, ETC. FOR THE DIRECTOR, DIVISION OF TAXATION.
 BY *[Signature]* LIC. #5009 STATE SUPERVISOR
 DATE DEC 8 1971 SERIAL No. 498

TAX MAP
 OF THE
BOROUGH OF LONGPORT
ATLANTIC COUNTY, N.J.
 SCALE: 1" = 50' 1970
 REV JAN. 1984
 J. THOMAS WOOD, JR., P.E. & L.S. NO. 8139
 GEORGE E. SCHILLING L.S. NO. 16198
 421 GUARANTEE TRUST BLDG.
 ATLANTIC CITY, N.J.