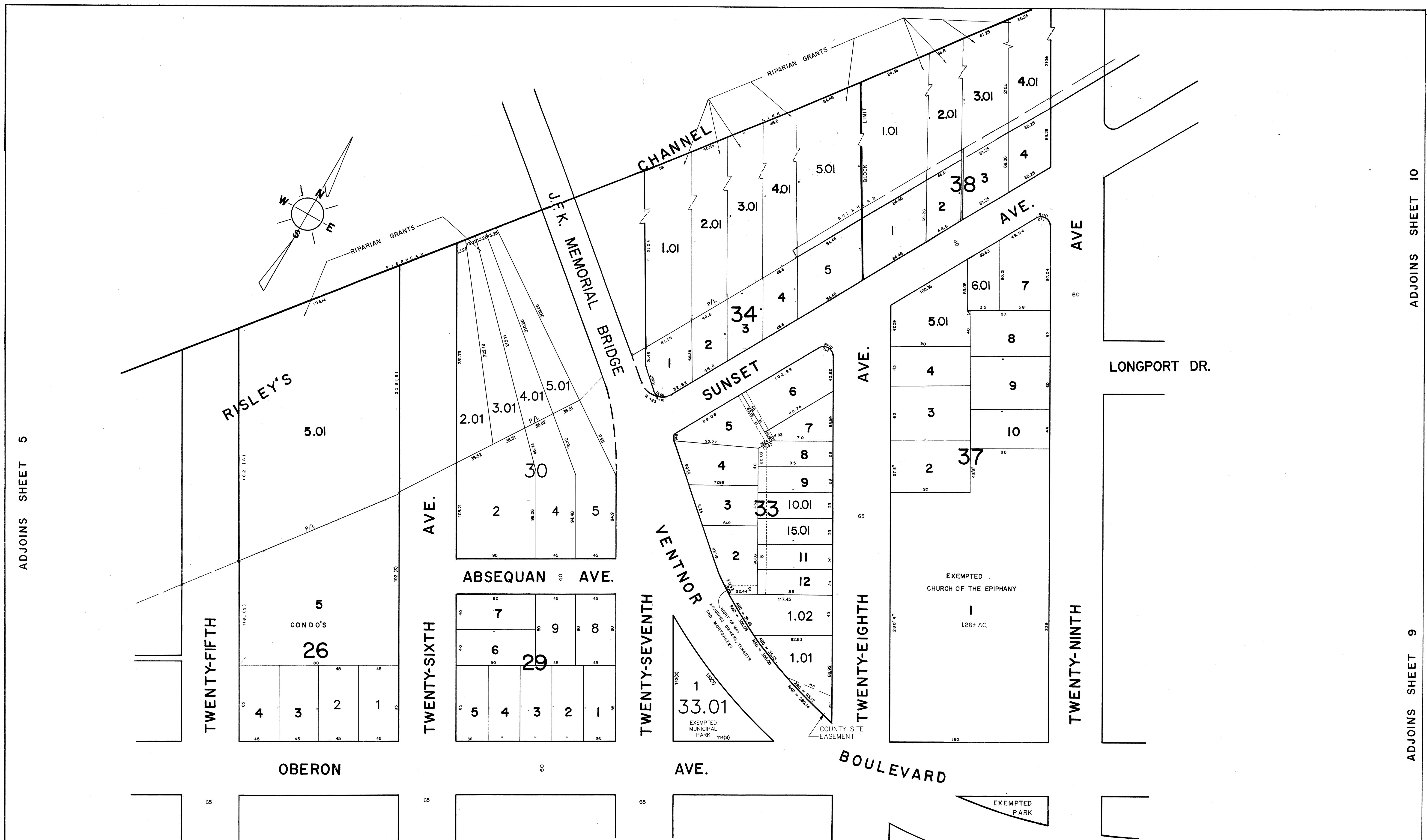


ADJOINS SHEET 5

ADJOINS SHEET 10

ADJOINS SHEET 9



DATE	REVISION	BY
2/2007	BLOCK 33, LOT 1 - SUBDIVISION	M. ENG
2/2006	BLOCK 26, LOTS 1, 2 - SUBDIVISION	M. ENG
5/2005	BLOCK 29, LOTS 8 & 9, PER ASSESSOR	M. ENG
10/25/02	BLOCK 37, LOTS 5.01 & 6.01	CBA
5/2001	BLOCK 38, LOTS 3, 4, SUBDIVISION	CBA
5/2001	BLOCK 30, LOT 1, SUBDIVISION	CBA
5/2001	BLOCK 33.01, LOT 1, PER ASSESSOR	CBA
12-1-92	GENERAL - PER N.J. DEPT. OF TREASURY	CBA
10-17-90	BLOCK 26, LOT 1, 2, MIN. SUBDIVISION	DECO

ADJOINS SHEET 6

NEW JERSEY DEPARTMENT OF THE TREASURY
 DIVISION OF TAXATION
 PUBLIC UTILITY TAX BUREAU
 APPROVED AS A TAX MAP PURSUANT TO THE
 PROVISIONS OF CHAPTER 175, LAWS OF 1915, ETC.
 FOR THE DIRECTOR, DIVISION OF TAXATION.
 BY *[Signature]* P.E. & L.S.
 LIC. #5009 STAT. SUPERVISOR
 DATE DEC 8 1970 SERIAL No. 498

TAX MAP
 OF THE
BOROUGH OF LONGPORT
ATLANTIC COUNTY, N.J.

SCALE: 1" = 50' 1970
 REV. JAN. 1984

J. THOMAS WOOD, JR., P.E. & L.S. NO. 8139
 GEORGE E. SCHILLING, L.S. NO. 16198
 421 GUARANTEE TRUST BLDG.
 ATLANTIC CITY, N.J.